

# SALAMANDERS OF BC'S SOUTH COAST

## Does the salamander have...

- bumpy, rough skin and
- a bright orange belly?

### Roughskin Newt

*Taricha granulosa*

- Lives in forests near water, or in wetlands.
- Bright orange colour alerts predators: "I am toxic, do not touch!"



Thick, bumpy skin



NO

- a plump body and
- large bumps (glands) behind the eyes?

### Northwestern Salamander

*Ambystoma gracile*

- Lives in water or moist habitats everywhere.
- Can retain gills as adults.



Large glands behind the eyes



NO

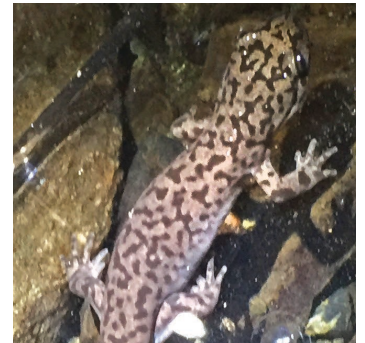
- a very long, thick body and
- mottled skin?

### Coastal Giant Salamander

*Dicamptodon tenebrosus*

**SPECIES AT RISK**

- Found in forested habitats with cool, clear mountain streams, only in Chilliwack.
- Can be found washed downstream in valley bottom ditches.



NO

- a translucent pinkish brown body and
- the base of its tail pinched?

### Common Ensatina

*Ensatina eschscholtzii*

- Lives and breeds on land in moist, shady forests – no aquatic or larval form.
- Found in and around decaying wood or moist rodent burrows.



Pinched base of tail



Photo: Elke Wind

NO



# SALAMANDERS OF BC'S SOUTH COAST – continued from front

## Does the salamander have...

- a thick, smooth stripe ranging from green to red down its back and
- a flat body and tail?

### Western Redback Salamander

*Plethodon vehiculum*

- Lives and breeds on land in moist, shady forests – no aquatic or larval form.
- Found under rocks and fallen wood or leaf litter.



**NO**

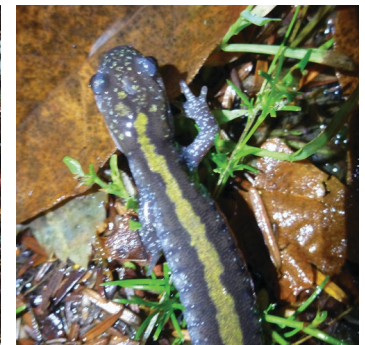
Check for smooth edges on stripe

- a green to dark yellow jagged-edged stripe down its back and
- a tail that narrows on the top?

### Long-toed Salamander

*Ambystoma macrodactylum*

- Lives in forests and moist habitats.
- Has long fourth toe on each hind foot.



**NO**

Check for irregular edges on stripe

- Is it a salamander-like creature with scaly skin?
- You may have found a reptile called a

### Northern Alligator Lizard

*(Elgaria coerulea principis)*



## Size comparison

Typical Adult Size



- Common Ensatina
- Western Redback Salamander
- Long-toed Salamander



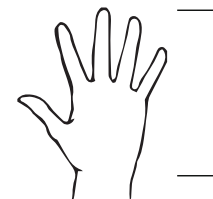
- Roughskin Newt



- Northwestern Salamander



- Coastal Giant Salamander



18 cm

Average Adult Hand

If you find a salamander, do not pick it up. The BC Wildlife Act prohibits moving or harming salamanders.

Share your sighting by sending a photo, or for more information, contact [outreach@fraservalleyconservancy.ca](mailto:outreach@fraservalleyconservancy.ca)

This project was undertaken with the financial support of:  
Ce projet a été réalisé avec l'appui financier de :



Environment and  
Climate Change Canada

Environnement et  
Changement climatique Canada



Fraser Valley Conservancy  
Placing lands in trust for our future