

PHASE I UPDATE

A detailed Monitoring and Adaptive Management Plan was developed for Aldergrove Park Marsh, and has been implemented at the Low Funding Model level.

Biodiversity monitoring of Phase I has detected breeding of Red-legged frogs (threatened), Western Toads (Special Concern), and Northwestern Salamanders. Sixty-six bird species have been identified in avian monitoring, including Barn Swallows (threatened) and Great Blue Herons (threatened). Fish monitoring identified Salish Suckers (threatened) and coho salmon in the waterways.

Invasive grasses have returned to approximately 50% of the site, and the south-east meadow was mowed in late summer as indicated in the Adaptive Management Plan.

PHASE II PROPOSAL

This application requests funds for:

- Full implementation of the Monitoring and Adaptive Management Plan developed for Phase I;
- Reclamation of upland Raspberry fields to Forest and Grassland;
- Support of Outreach and Stewardship Activities;
- Initial investigation and Design to restore hydrology and improve biodiversity on 30 Ha of historic marsh / swamp; and
- Initial Site Preparation activities for marsh restoration.

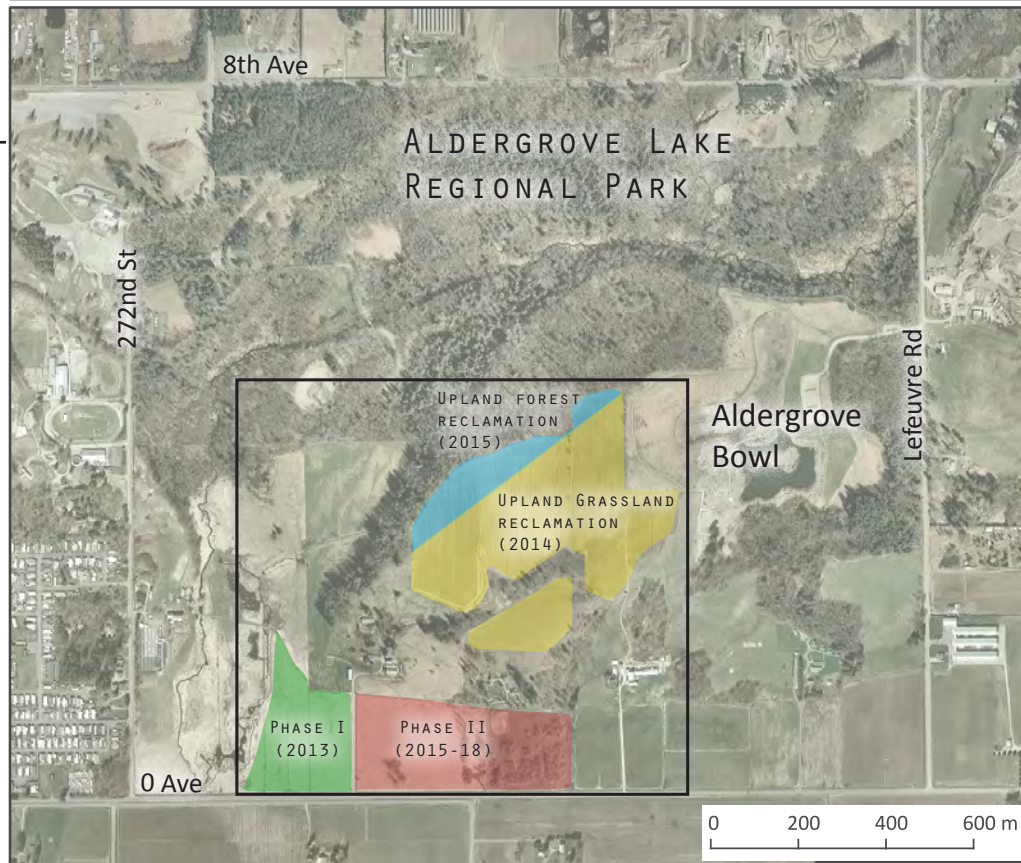
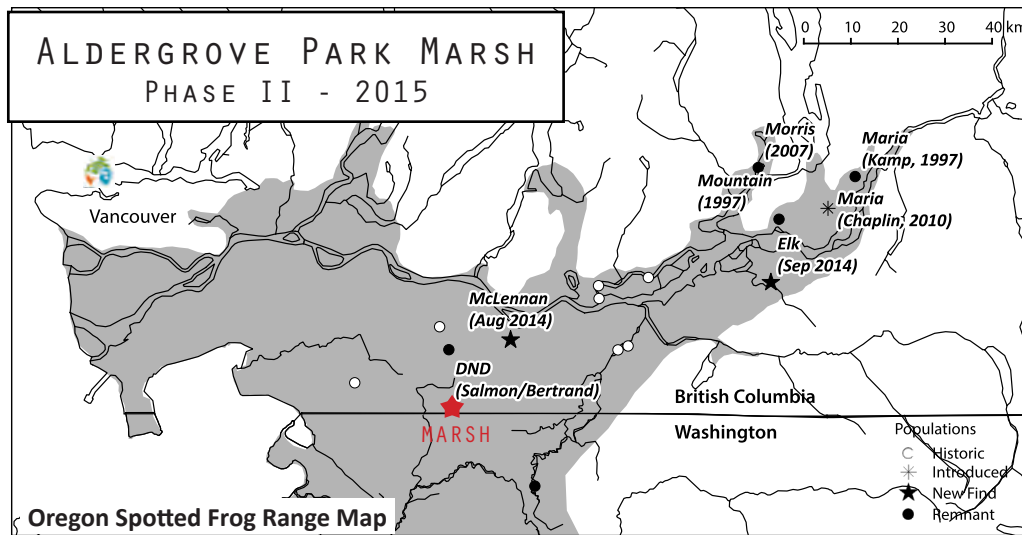
In Fall 2015, we will apply for a 3-year grant from the National Conservation Wetland Fund to implement the detailed restoration plan designed in 2015, with construction timelines, budget requirements, and projected outcomes.

The **GOALS** of this project are to:

- Provide recovery habitat for endangered Oregon Spotted Frogs;
- Enhance wildlife biodiversity, focusing on Species-at-Risk;
- Provide outdoor education, stewardship and research opportunities; and
- Increase our knowledge of marsh restoration techniques.

We will develop a detailed design for Phase II of the marsh restoration project, and intend to submit a proposal for a 3-year restoration plan in 2015. Design will build on our previous experience, reference established protocols (Biebighauser, Newbury, etc) and recently-published Wetland Prairie Restoration Guidelines, and incorporate experimental methods recommended by SAR management partners in the US. This will require primary investigations into topography, soil structure, soil and water chemistry, hydrology, and pre-construction biodiversity surveys.

Prior experience indicates that invasive species management is a critical first step that should be implemented as early in the restoration process as possible. For this reason, we are also requesting funds for site preparation in Year 1, as this will greatly enhance the success of native plant establishment in future years.



ALDERGROVE PARK MARSH

PHASE I - PHOTOS

In 2013-14, in partnership with Metro Vancouver, the Vancouver Aquarium, BC FLNRO and several additional local not-for-profit organizations, we restored 5 Ha of shallow marsh habitat within Aldergrove Regional Park. A detailed Monitoring and Adaptive Management Plan has been developed for Phase I, and is currently being partially implemented by volunteers and in-kind contributions.

The monitoring program will measure success as per identified goals, inform adaptive management of the wetland as prescribed in the design documents, and inform the design and implementation of future marsh restoration projects.

Monitoring of our successes and failures will provide us with valuable lessons which can be applied across future marsh restoration projects, as well as the recovery of the communities dependent on these historically prevalent landscape features.

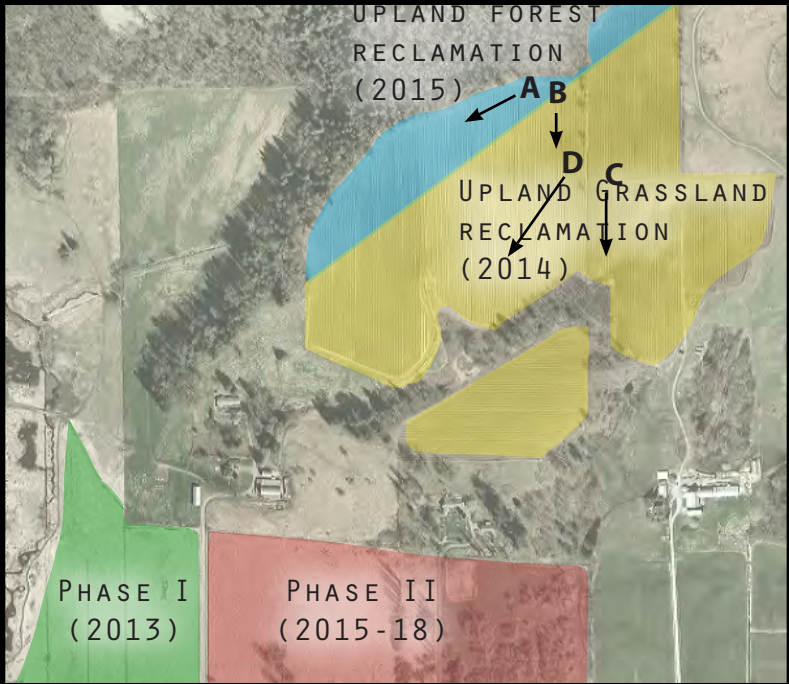


ALDERGROVE PARK MARSH

UPLAND GRASSLAND AND FOREST RECLAMATION

In 2014, Metro Vancouver removed high-intensity agriculture (raspberry production) from an upland field upslope of the marsh restoration sites.

We will plant approximately 4000 native tree and shrub species over 8.5 Ha of reclaimed field, working with volunteer groups and Metro Vancouver staff.



ALDERGROVE PARK MARSH

PHASE II - PHOTOS

We will develop a detailed design for Phase II of the marsh restoration project, and intend to submit a proposal for a 3-year restoration plan for the 2015/16 intake. The design will build on our previous experience, reference established protocols (Biebighauser, Newbury, etc) and recently-published Wetland Prairie Restoration Guidelines, and will incorporate experimental methods recommended by SAR management partners in the US. This will require primary investigations into topography, soil structure, soil and water chemistry, hydrology, and pre-construction biodiversity surveys.

Prior experience indicates that invasive species management is a critical first step that should be implemented as early in the restoration process as possible. For this reason, we are also requesting funds for site preparation in Year 1, as this will greatly enhance the success of native plant establishment in future years.

